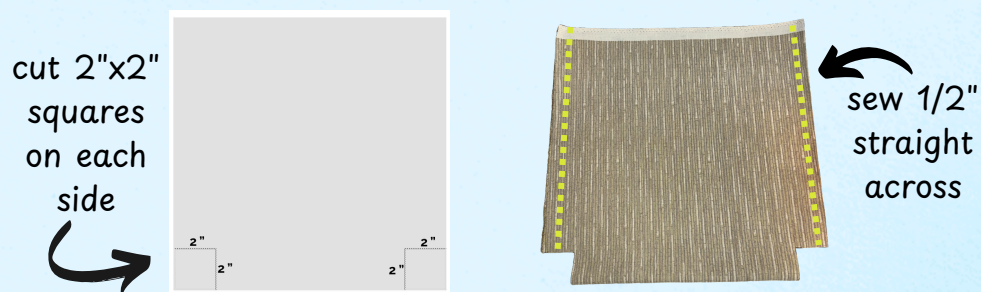


Tote Bag Sewing Instructions



1

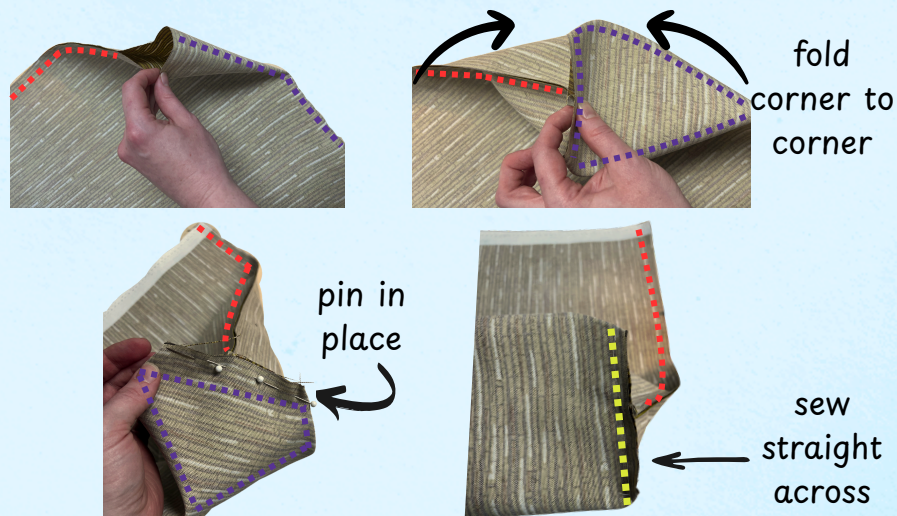
- Start with one piece of fabric measuring 18" x 36"
- Fold the fabric in half with right sides together so it becomes an 18" x 18" square
- Sew the sides with a 1/2" seam allowance, leaving the top open
- At the bottom 2 corners, cut out 2"x2" squares



2

*sewn side seam:..... *bottom of bag:.....

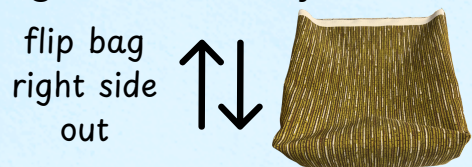
- Open up one of the corners, and fold together so that the side seam and bottom seam match up.



- Sew together, and repeat for the other corner.

3

- Grab **two** 25" long webbing straps
- With the bag right side out, lay it flat.

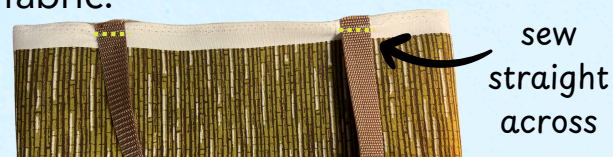


- Place straps 4.5" in from side seams. Align strap ends with top edge, pin.

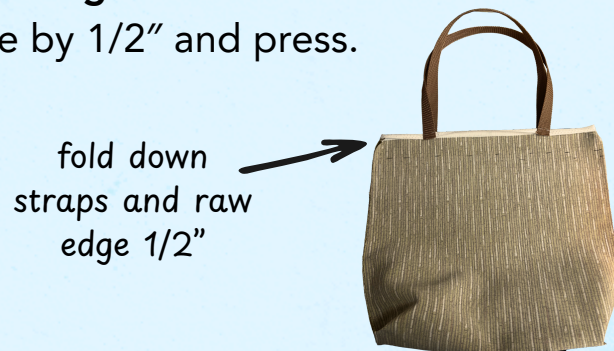


4

- Stitch the straps 1/2" from the top raw edge, on the right side of the fabric.



- Now **flip your bag inside out**. Fold down the straps and raw edge by 1/2" and press.



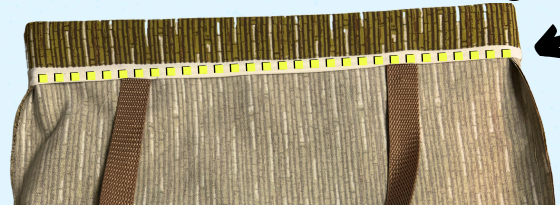
5

- Fold in again towards the wrong side, this time by 2". With straps facing downwards towards the bottom of the bag. Pin in place.

fold down 2"



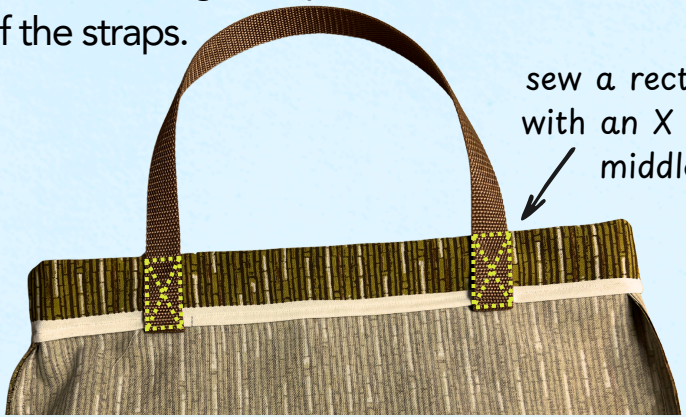
- Stitch along the entire edge, all the way around the bag, close to the folded under edge.



sew all the way around

7

- Stitch each strap in place by sewing a rectangle, with the stitching close to each edge, and then sewing an X through the rectangle. Repeat 3 more times for the other ends of the straps.



sew a rectangle with an X in the middle

- Now flip inside out. Congratulations, you have made a tote bag!

6

- Still working from the wrong side/inside - now flip each strap back up, making sure they are aligned straight, and pin in place.

straps up and pin



8

Bonus- Lining!

- Choose a lining fabric and repeat steps 1 and 2.
- Insert the Lining Fabric inside the Exterior Fabric with right sides together. Line up side seams.

exterior fabric



lining fabric



- Leave a 3" opening for turning you bag. Using a 1/4" seam allowance, stitch around the top edge of your bag.

leave 3" opening on one side



sew 1/4" from edge around whole bag

- Turn your bag right side out



- Push the lining fabric into the bag and press the top edge. Topstitch around the entire top of the bag using a 1/8" seam.

sew 1/8" from edge around whole bag

